

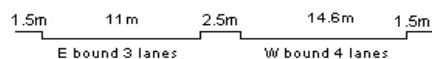
YEAR 2016

CORE STATION 5025

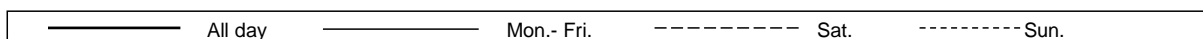
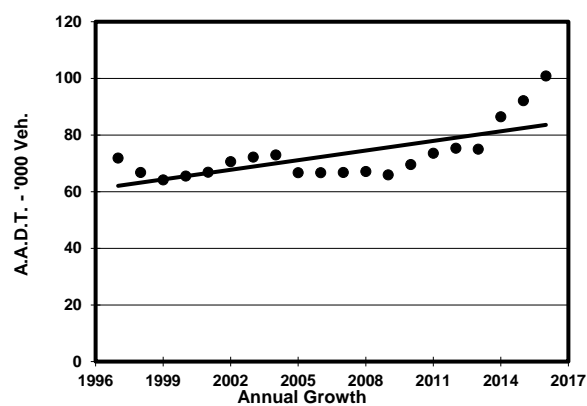
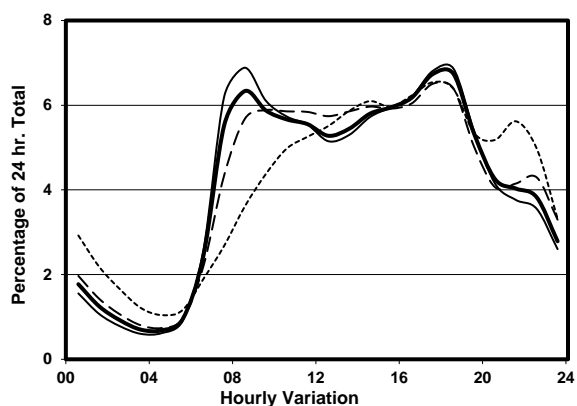
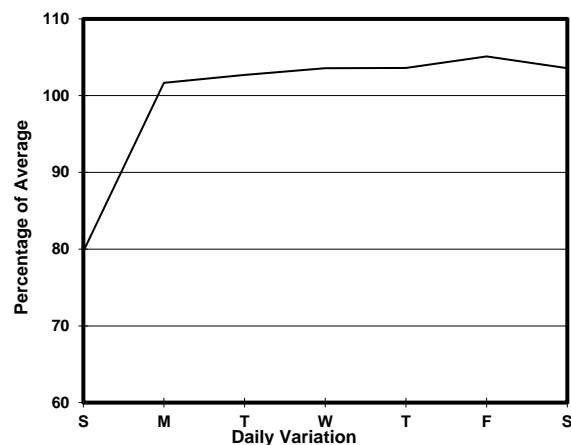
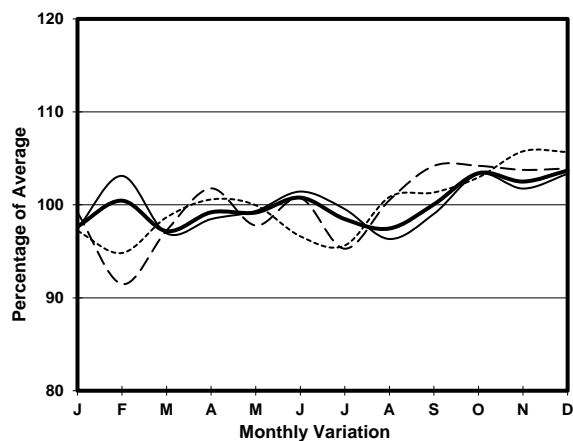
ROAD NETWORK MAJOR

ROAD TYPE EXPRESSWAY

LINK YUEN LONG HIGHWAY (from TIN SHUI WAI WEST INT to LAM TEI INT)



## 1. TRAFFIC FLOW VARIATION AND GROWTH



## 2. TRAFFIC CHARACTERISTICS (BY DIRECTION)

Parameter	All - Day	Mon. - Fri.	Sat.	Sun.
<b>EAST BOUND</b>				
A.A.D.T.	51750	54230	54030	41050
R 12 / 24 - %	70.3	71.8	69.1	61.8
R 16 / 24 - %	88.8	89.7	87.7	84.4
AM Peak Hour	0800-0900	0800-0900	0900-1000	0900-1000
One-way flow at AM peak hour	3220	3680	3110	1710
T - % (AM)	-	25.9	-	-
PM Peak Hour	1700-1800	1700-1800	1700-1800	1800-1900
One-way flow at PM peak hour	3540	3770	3560	2630
T - % (PM)	-	26.3	-	-
Prop.of commercial vehicles - 16 hr.	-	25.7	-	-
<b>WEST BOUND</b>				
A.A.D.T.	49050	51080	51690	40040
R 12 / 24 - %	71.9	73.2	71	65.2
R 16 / 24 - %	88.2	88.9	87.4	84.9
AM Peak Hour	0800-0900	0800-0900	0900-1000	0900-1000
One-way flow at AM peak hour	3170	3570	3110	1840
T - % (AM)	-	23.9	-	-
PM Peak Hour	1800-1900	1800-1900	1700-1800	1700-1800
One-way flow at PM peak hour	3280	3470	3320	2690
T - % (PM)	-	13.2	-	-
Prop.of commercial vehicles - 16 hr.	-	23.5	-	-

## 3. OTHER INFORMATION AND COMMENT

**4. Vehicle classification and occupancy - Monday to Friday**

Time		Class of vehicle									
		Motor	Private	Taxi	Private	PLB	Goods veh.		Non	Fr. Bus	
		Cycle	Car		LB		Light	M & H	Fr. Bus	SD	DD
0700-0800	Pro	1.9	41.3	11.2	0.8	2.1	19.2	17.1	5.2	0.1	1.1
	Ocp	1.0	1.3	2.2	6.3	14.1	1.3	1.1	17.3	31.2	21.8
0800-0900 Peak hour	Pro	1.9	41.7	9.0	0.7	2.1	19.7	20.9	3.3	0.1	0.6
	Ocp	1.0	1.3	2.2	3.3	14.4	1.3	1.1	18.3	35.9	36.1
0900-1000	Pro	1.2	35.2	8.0	0.8	1.4	24.5	25.0	2.7	0.1	1.1
	Ocp	1.0	1.4	2.0	2.2	14.6	1.3	1.2	10.0	22.5	19.7
1000-1100	Pro	1.1	28.0	7.2	0.5	1.0	29.3	28.8	2.9	0.1	1.2
	Ocp	1.1	1.4	2.0	2.0	14.5	1.3	1.2	24.3	32.0	26.3
1100-1200	Pro	1.2	25.9	10.0	0.9	1.8	28.9	26.6	3.4	0.1	1.3
	Ocp	1.1	1.6	2.1	2.4	12.8	1.3	1.2	12.9	35.0	25.6
1200-1300	Pro	1.3	33.2	10.5	1.0	1.6	23.1	25.3	2.8	0.1	1.2
	Ocp	1.2	1.4	2.0	1.6	12.0	1.4	1.2	14.7	32.3	24.8
1300-1400	Pro	0.4	34.7	7.1	0.9	1.7	23.8	27.7	2.6	0.2	1.0
	Ocp	1.0	1.6	2.3	3.7	13.0	1.3	1.2	14.1	21.9	23.0
1400-1500	Pro	1.2	36.5	8.6	0.9	1.1	23.5	24.9	2.4	0.1	0.8
	Ocp	1.1	1.6	2.0	1.7	11.1	1.3	1.2	15.2	24.5	32.4
1500-1600	Pro	1.6	31.5	9.3	0.4	1.0	24.6	27.4	3.0	0.1	1.0
	Ocp	1.1	1.5	2.2	2.8	13.3	1.4	1.2	13.6	29.3	28.1
1600-1700	Pro	1.0	38.0	8.4	1.2	1.0	22.2	23.2	3.6	0.1	1.3
	Ocp	1.2	1.5	2.2	3.4	14.1	1.4	1.1	15.7	26.6	26.6
1700-1800	Pro	1.6	40.7	9.1	1.4	0.9	22.4	18.3	4.5	0.1	1.0
	Ocp	1.0	1.4	2.3	2.4	15.0	1.3	1.1	11.4	33.9	34.9
1800-1900	Pro	2.3	59.9	7.0	0.5	2.0	15.6	9.3	2.5	0.1	0.8
	Ocp	1.1	1.5	2.2	1.5	16.3	1.2	1.2	19.2	34.3	46.1
1900-2000	Pro	1.3	57.2	8.3	0.2	1.7	14.1	9.2	6.8	0.1	1.1
	Ocp	1.1	1.4	2.2	1.7	15.0	1.2	1.2	12.2	28.8	22.8
2000-2100	Pro	1.4	57.9	12.4	0.4	1.9	11.6	7.0	5.4	0.2	1.8
	Ocp	1.1	1.4	1.9	1.8	14.9	1.3	1.1	9.2	25.9	11.1
2100-2200	Pro	1.6	57.1	13.9	0.4	2.2	11.5	8.1	3.6	0.2	1.5
	Ocp	1.2	1.4	2.1	2.3	15.7	1.4	1.2	8.5	20.6	14.3
2200-2300	Pro	3.2	64.2	14.5	0.4	2.4	5.3	4.6	3.4	0.1	1.8
	Ocp	1.0	1.4	1.9	1.7	14.8	1.3	1.2	9.6	12.0	9.3
16 hours	Pro	1.5	41.6	9.3	0.8	1.6	20.7	19.8	3.6	0.1	1.1
	Ocp	1.1	1.4	2.1	2.7	14.2	1.3	1.2	14.3	28.2	24.8

**Legend**

**Pro.** Proportion of vehicles in % (Sum may not add up to 100% due to figure rounding)\*

**Ocp.** Average occupancy of vehicles including both driver and passengers\*

**M&H** Medium and Heavy

\* All traffic data are collected from combined bounds except for one way traffic